

Social Narrative

Houston Symphony
Sherlock Holmes and the Case of the
Missing Maestro

Saturday, March 1st
10:00 am & 11:30 am
at Jones Hall

HOUSTON  SYMPHONY



 PNC | Family Series

SHERLOCK HOLMES
AND THE CASE OF THE
MISSING MAESTRO

March 1

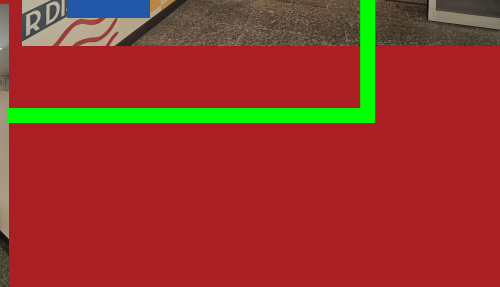
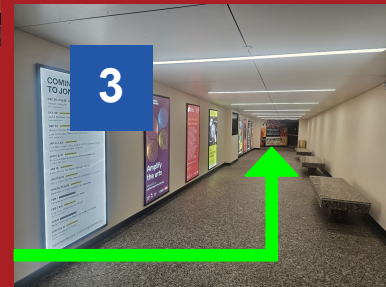
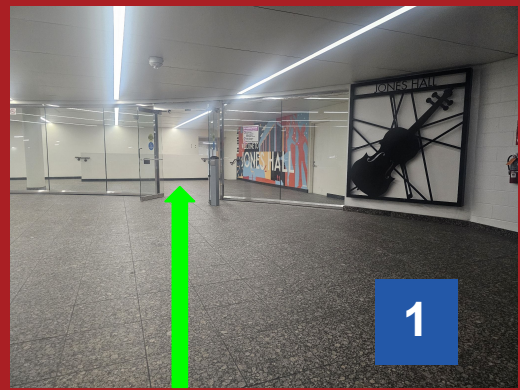
HOUSTON
Methodist
Underwriter

March 2025

SUN	MON	TUE	WED	THU	FRI	SAT
23	24	25	26	27	28	1 
2	3	4	5	6	7	8
9	10	11	12	13	14	15
16	17	18	19	20	21	22
23	24	25	26	27	28	29
30	31	1	2	3	4	5

On Saturday, March 1st at
10:00am, I am going to
Jones Hall to see a show
called *Sherlock Holmes
and the Case of the
Missing Maestro* by
Houston Symphony.

When we get there, we will park the car in the parking garage and walk into the building together.



First, we will walk to the box office to collect our tickets for the show.



Then, we will hand our tickets to person at the entrance as we go inside Jones Hall.



If there is a line, we will wait patiently for our turn.

Once inside, there will be a lot of fun things to do before the show starts!

LOBBY ACTIVITIES



Make your way around to the different activity areas before the 10 a.m. concert and after the 11:30 a.m. concert.

STUDENT PERFORMERS

Location: Main lobby

Stop by the performance area to hear students perform!

- Carver High School String Ensemble
(in the lobby before and after the 10:00 performance)
- DeLUXE Kids In Harmony
(in the lobby after the 11:30 performance)

Scan here to listen
to music from
today's concert!



STRING INSTRUMENT PETTING ZOO

Location: Mezzanine



Stop by the instrument petting zoo to try instruments from the string family!

GUESS THE INSTRUMENT!

Location: Round Bar



Use your detective skills to guess the instrument using only touch and sound!

CRAFT

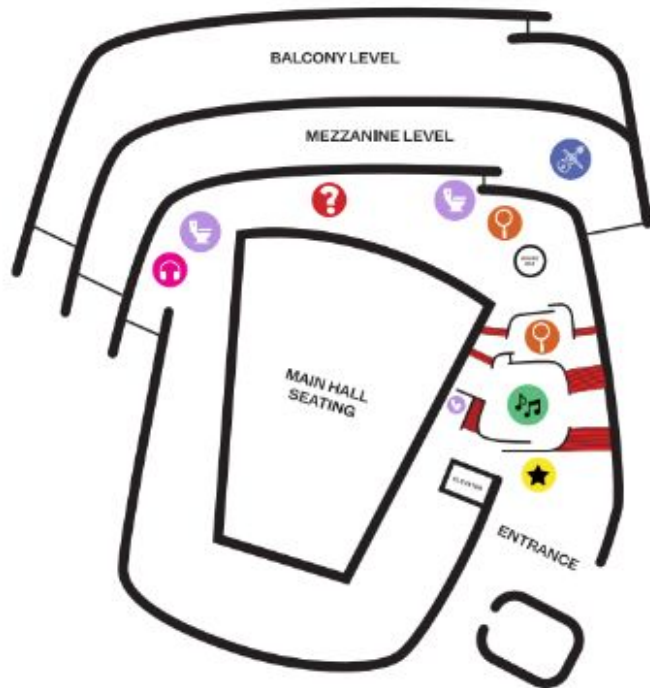
Location: Lobby and Round Bar



Make your own Magnifying Glass!



I can use the map to help find all the places I want to go.



STUDENT PERFORMERS

Carver High School String Ensemble
(in the lobby before and after the 10:00 performance)
DeLUXE Kids In Harmony
(in the lobby after the 11:30 performance)



CRAFT

Make your own magnifying glass!



GUEST EXPERIENCE TABLE

Stop by for assistance with any needs to enhance your concert experience. We're here to support everyone!



INSTRUMENT PETTING ZOO

String family



GUESS THE INSTRUMENT



RESTROOMS

Courtyard level



CALMING SENSORY ROOM

Even though I can go at any time, it is a good idea to use the restroom before the show starts!

A bell will ring when it is time to go inside the theater to find our assigned seats.



We can ask for help finding our seats if we need to.

**Once we walk to
our seats,
we will sit and
wait for the show
to start.**



**When the show starts,
the lights in the theater will get
darker...**

...then there will be
a short
announcement
about the show,
and then the
musicians
will come out!



PROGRAM

Gonzalo Farias, conductor
Galen Fott, actor

OVERTURE TO *RUSLAN AND LUDMILA*

GLINKA



SHERLOCK'S ENTRANCE

D. RICHARD



MARCH FROM *SUPERMAN*

J. WILLIAMS



SCHERZO FROM *A MIDSUMMER NIGHT'S DREAM*, OPUS 61

MENDELSSOHN



THEME FROM *THE PINK PANTHER*

MANCINI



SERENADE IN C MAJOR FOR STRINGS, OPUS 48 II. WALZER: MODERATO, TEMPO DI VALSE

TCHAIKOVSKY



EL GUMBANCHERO

HERNÁNDEZ/GONZALES



DANCE OF THE HOURS FROM *LA GIOGONDA*

PONCHIELLI



THUNDER AND LIGHTNING, OPUS 324

J. STRAUSS, JR.



SYMPHONY NO. 4 IN F MINOR, OPUS 36 IV. FINALE: ALLEGRO CON FUOCO

TCHAIKOVSKY



During the show, the musicians will play different instruments.



**If it is too loud,
I can wear my headphones
or take a break
outside of the theater.**

Once the show is over, the people on stage will bow, the audience will cheer, and the lights will get brighter.



After the people on stage leave, it will be time for us to walk back to our car and go home!